

DFMT

FLOOR MOUNTED TUBE STAND

with Digital Display

This tube stand only requires a floor mounted rail for support and can be installed in rooms with ceiling heights as low as 87" (221 cm). It is an ideal choice for a complete range of radiographic procedures and eliminates the need for costly modifications.

Key Highlights

Extensive Longitudinal and Transverse Travel

Focal Spot Positioning at 11" (28 cm) Above Floor for Weight Bearing Exams

Tube Mount Rotation of +/- 180°

Column Rotation of +/- 180° (Where Installation Permits)



Technical Specifications

* All specifications subject to change without notice

DFMT Floor Mounted Tube Stand

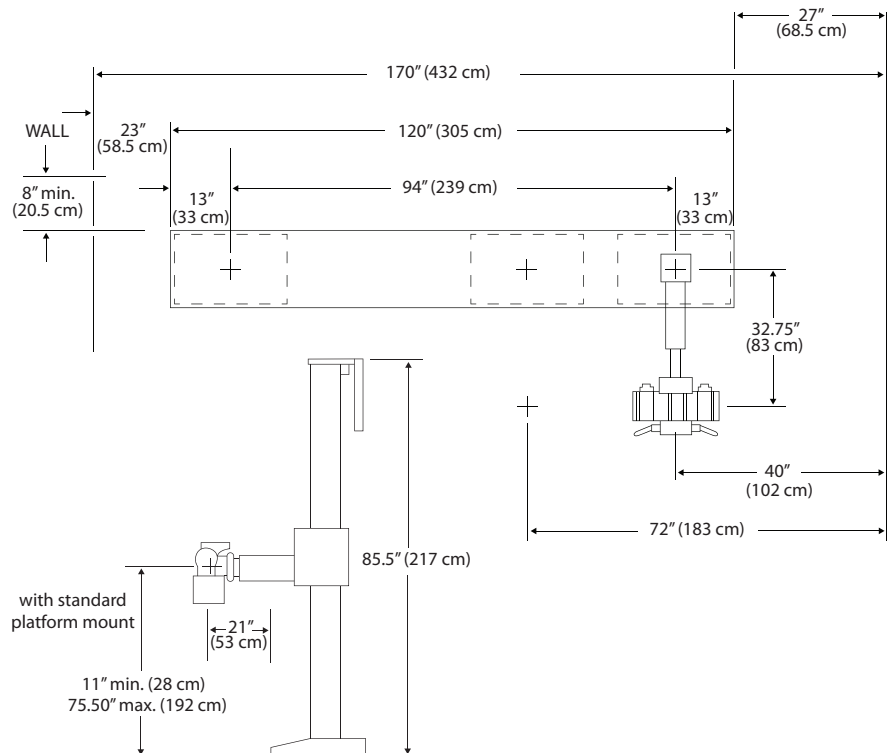
Ceiling height:	Minimum 87" (221 cm)
Column height:	85.50" (217 cm)
Vertical travel:	64.5" (164 cm) total
Floor to focal spot (with standard platform mount):	Minimum 11" (28 cm) / Maximum 75.50" (192 cm)
Longitudinal travel:	94" (239 cm)
Rail longitudinal length:	120" (305 cm)
Transverse travel:	11" (28 cm)
Tube, collimator and cable support capacity:	88 lbs. (40 kg)
Tube standard weight:	460 lbs. (209 kg)
Platform assembly weight:	125 lbs. (57 kg) net
Column rotation:	180° where installation permits
Tube rotation:	+/-180° detents
Base assembly to rear wall:	8" (20.5 cm)

Certifications

ETL listed

DFMT Options:

- 140kHU, 200kHU, 300kHU or 400kHU X-ray tubes
- Manual, semi-automatic or fully automatic collimators
- Trunnion mount



www.delmedical.com

New York
28 Calvert Street
Harrison, NY 10528
(Tel) 800.261.9808
(Fax) 914.835.6111

Illinois
241 Covington Drive
Bloomington, IL 60108
(Tel) 800.800.6006
(Fax) 847.288.7011

DEL MEDICAL

#9000-DFMTDS 02.19